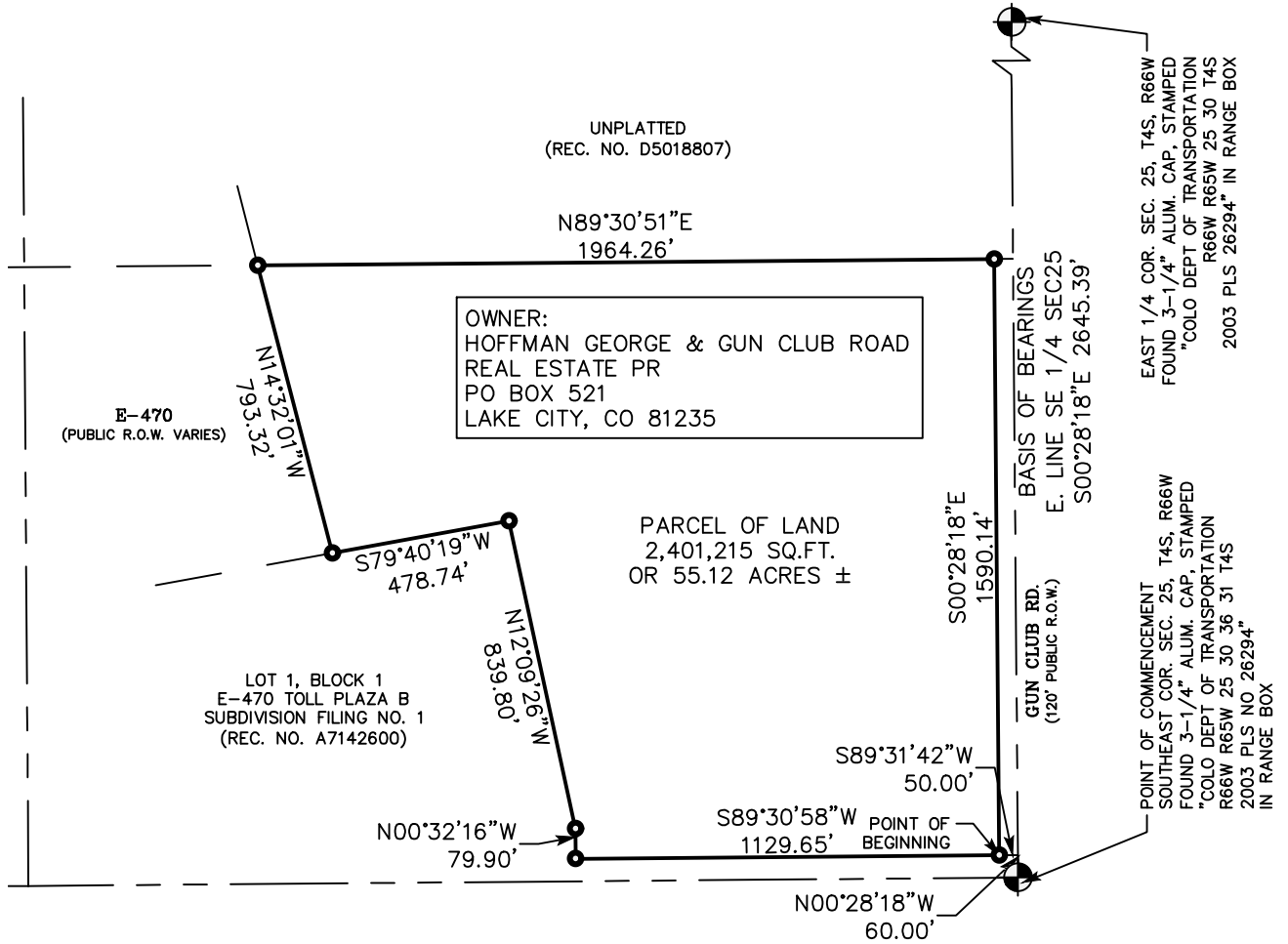
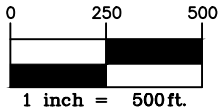


ILLUSTRATION FOR EXHIBIT A



GRAPHIC SCALE



THE ABOVE DESCRIBED PARCEL CONTAINS 2,401,215 SQUARE FEET OR (55.12 ACRES) MORE OR LESS.
This illustration does not represent a monumented survey. It is intended only to depict the attached legal description.

| | | |
|---------------------------|---------------------|--|
| CITY OF AURORA, COLORADO | | A PARCEL OF LAND, SITUATED IN THE SE 1/4 OF SECTION 25, T 4 S, R 66 W 6TH P.M., CITY OF AURORA, ARAPAHOE COUNTY, COLORADO, |
| DRAWN BY: T. HENDERSON | SCALE: 1" = 500' | R.O.W. FILE NUMBER |
| CHECKED BY: JK/SS | DATE: 01/07/2022 | JOB NUMBER: 21-77,555 |